



Pressure transmitter



Type 560

Pressure transmitter
for refrigerant applications

NEW: Pressure transmitter type 560

The type 560 is a pressure transmitter based on proven Huba Control stainless steel sensor technology. Its hermetically welded design makes it ideal for use with refrigerants and media from safety classes A2L and A3. Thanks to its extensive selection of pressure connections, it can be optimally integrated into a widerange of applications.

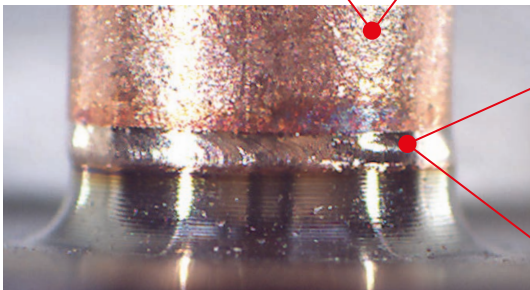
Highest safety with combustible refrigerants

- Hermetically welded construction without elastomer seal
- 100% leak test with helium during manufacture
- Surface temperature in proper operating and fault conditions, evaluated according to DIN EN 60335-2-40
- Two-colour connector design for visual identification of different pressure ranges in the application
- Reduction of installation-related signal offset thanks to force-decoupled measuring element

Connection-safe copper soldering tube

The variant with copper soldering tube can be soldered directly into the pipe system of refrigerant applications, e.g. heat pumps. The factory hermetic welding of the copper tube to the steel body of the sensor ensures a first-class solder joint quality. This helps improve system reliability and optimises assembly productivity by reducing soldering time.

Burst pressure of the copper tube: >600 bar



Optimum soldering quality due to uniform heat distribution by means of a copper soldering tube

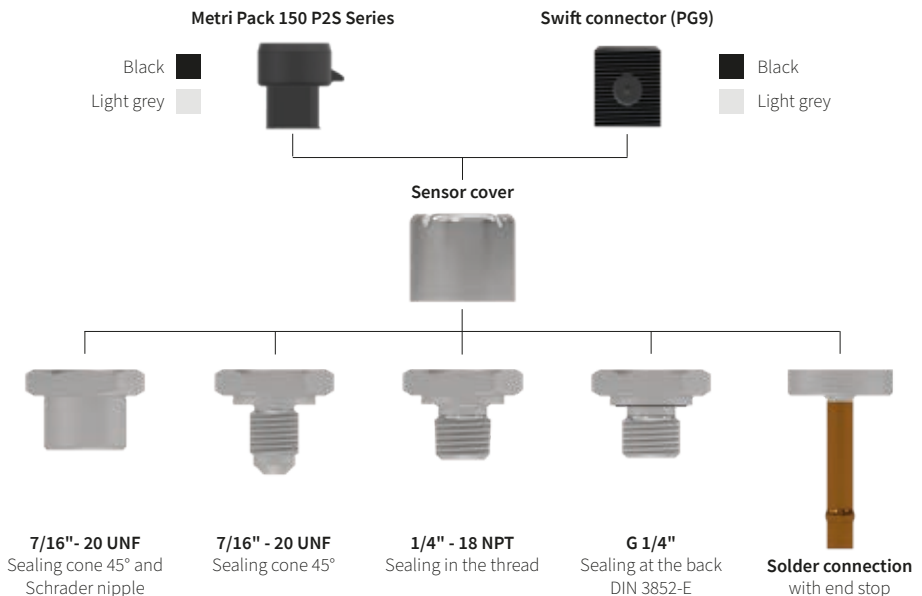
100% leakage control with helium: hermetically welded with a leakage rate of less than $6 \cdot 10^{-7}$ (mbar x l)/s

Minimum tear-off force: 3.5 kN
+ No failure in weld seam

Technical data

Pressure range (relative)	-1 ... 150 bar		
Accuracy	± 0,5% FS (Fullscale)		
Temperature	-40 ... +125 °C (other temp. on request)		
Materials in contact with medium	Thread:	Stainless steel 1.4301 / AISI 304	
	Soldering connection:	CuDHP / CW024A	
	Sensor:	Stainless steel 1.4016	
Electrical connection	Swift connector (PG9) Metri Pack 150 P2S Series		
Output / Power supply	Ratiom. 10 ... 90%	2.97 ... 5.5 VDC	3 wire
	Analog 4 ... 20 mA	8 ... 32 VDC	2 wire
Pressure connection	Inside thread:	$\frac{7}{16}$ -20 UNF with Schrader	
	Outside thread:	$\frac{7}{16}$ -20 UNF, $\frac{1}{4}$ -18 NPT, G $\frac{1}{4}$ (FKM), G $\frac{1}{4}$ (EPDM)	
	Soldering connection:	DN = 6 mm, L = 35 mm	
Admissions	UL:	ANSI/UL 61010-1	acc. to E325110
	EMV:	CE-Conform	acc. to EN 61326-2-3:2013

Overview of versions



More information online



On our website you will find more information on the type 560 and can simply submit your enquiry.

hubacontrol.com/en/products/pressure-transmitter/pressure-transmitter-560

Huba Control AG

Headquarters Schweiz
Industriestrasse 17
CH-5436 Würenlos
Tel +41 56 436 82 00
info.ch@hubacontrol.com

Area support finder

Contact for product and application advice in your area:



hubacontrol.com/en/countries-markets